



SOLARMAN
Monitors & Controls Networked

Midea HiCONICS

1

Create Business account

2

Create plant

3

Add a Data Logger

4

**How to create End user account
via business account**

**Overseas Technical Support Dep
13 May 2024**

App Download

Please scan the QR code for more information

Account Register

Step: Start register

You can use E-mail or Phone Number to register a new account, but using E-mail is recommended.

Region Choose: there are two region "Mainland China" and "International", click

Register
Enter E-mail or Phone Number

International

E-mail

Verification Code

I have read and agree to [T&Cs](#) [Privacy Policy](#)

Next

Switch to phone registration

Choose Region

Please select the region corresponding to your business scope. The system will register you in the chosen region based on your selection.

Mainland China

Confirm

Account Register

Step 2: Input account information

“Name”: Input your name, you can input your own name or your company name as you want.

“Username”: it is not mandatory, it is a optional;

“Password”: Set the password follow the request.

Click “Next”.

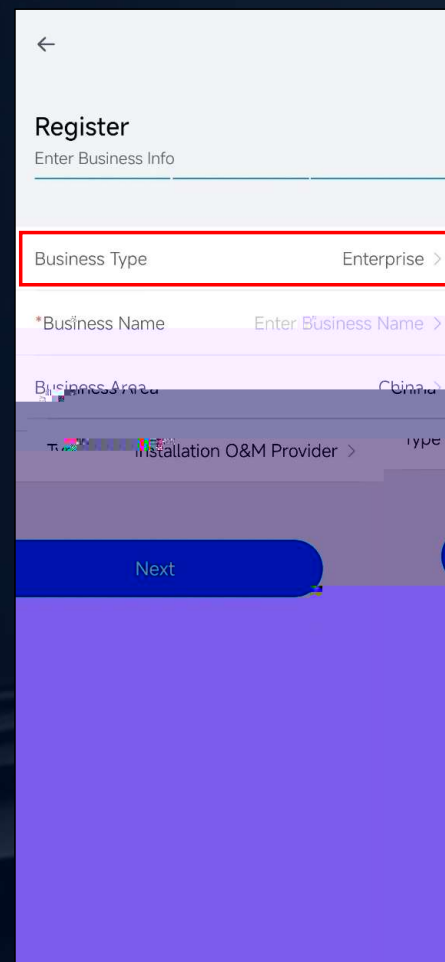
The screenshot shows a mobile application interface for account registration. At the top, there is a back arrow and the title 'Register' with the subtitle 'Enter Account Info'. Below this, there are three input fields: 'Name', 'Username', and 'Password'. The 'Name' and 'Password' fields are marked with an asterisk, indicating they are required. Below the 'Password' field, there is a password strength indicator: 'A combination of letters and numbers with more than 8 characters'. At the bottom of the form, there is a blue 'Next' button, which is highlighted with a red rectangular box.

Account Register

Step 3 Input business information

Click "Business Type",

Select the business type based on real situation



j So Ste " !

Account Register

Step 3 Input business information

Click "Business Area";

Account Register

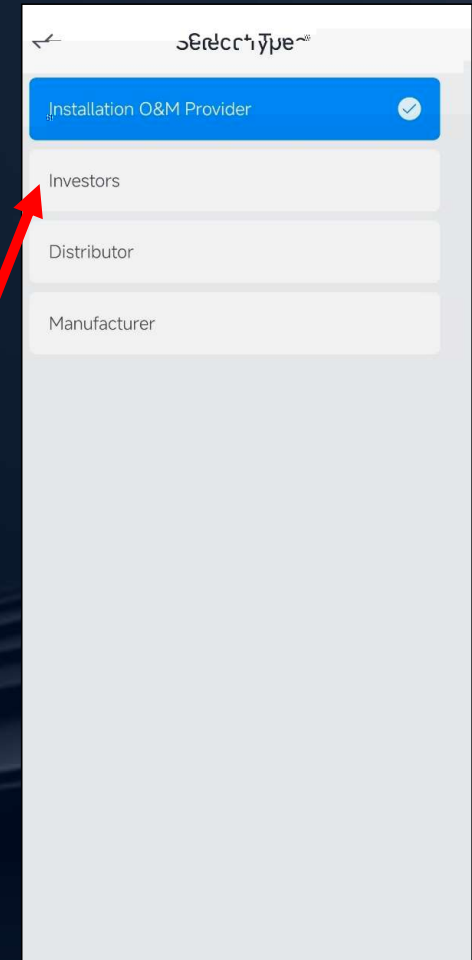
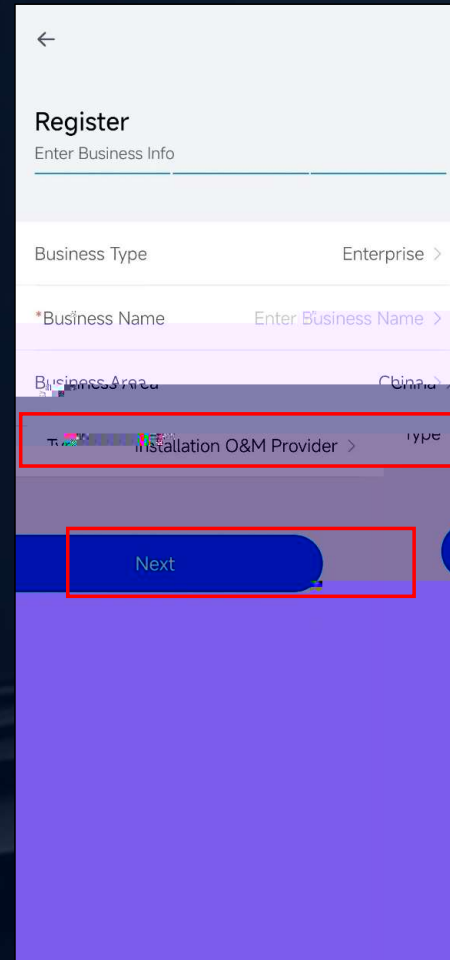
Step 3 Input business information

Click "Type";

Select the type based on real situation;

Click "Next";

It will show that you register successfully.



App Login

After successful account registration, you can login.

You can login in three different ways, by E-mail is recommended;

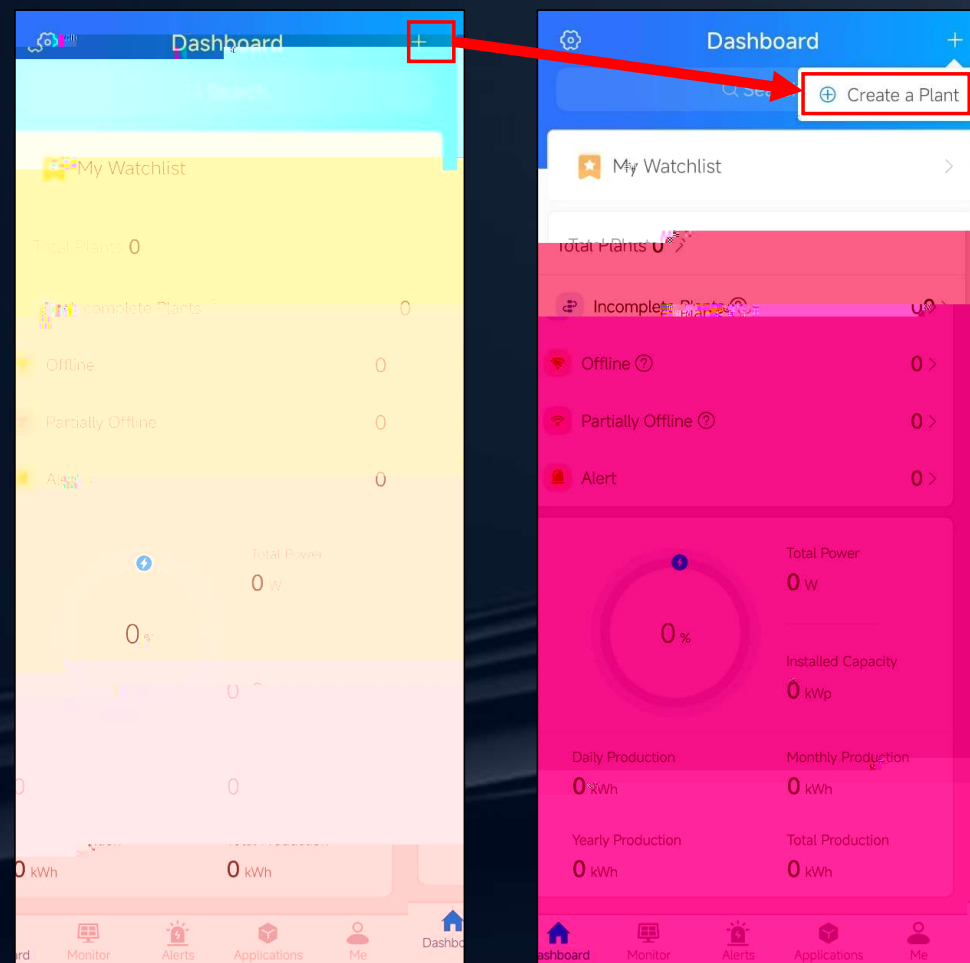
Input your email and password, and then click "Log In".

After login, you will enter the interface shown as left picture.

Add Power Plant

After login, you can add your power plant in the app, you can create a power plant via two different ways. Method one

Click the "+" at the top right corner of Dashboard, choose "Create a Plant".

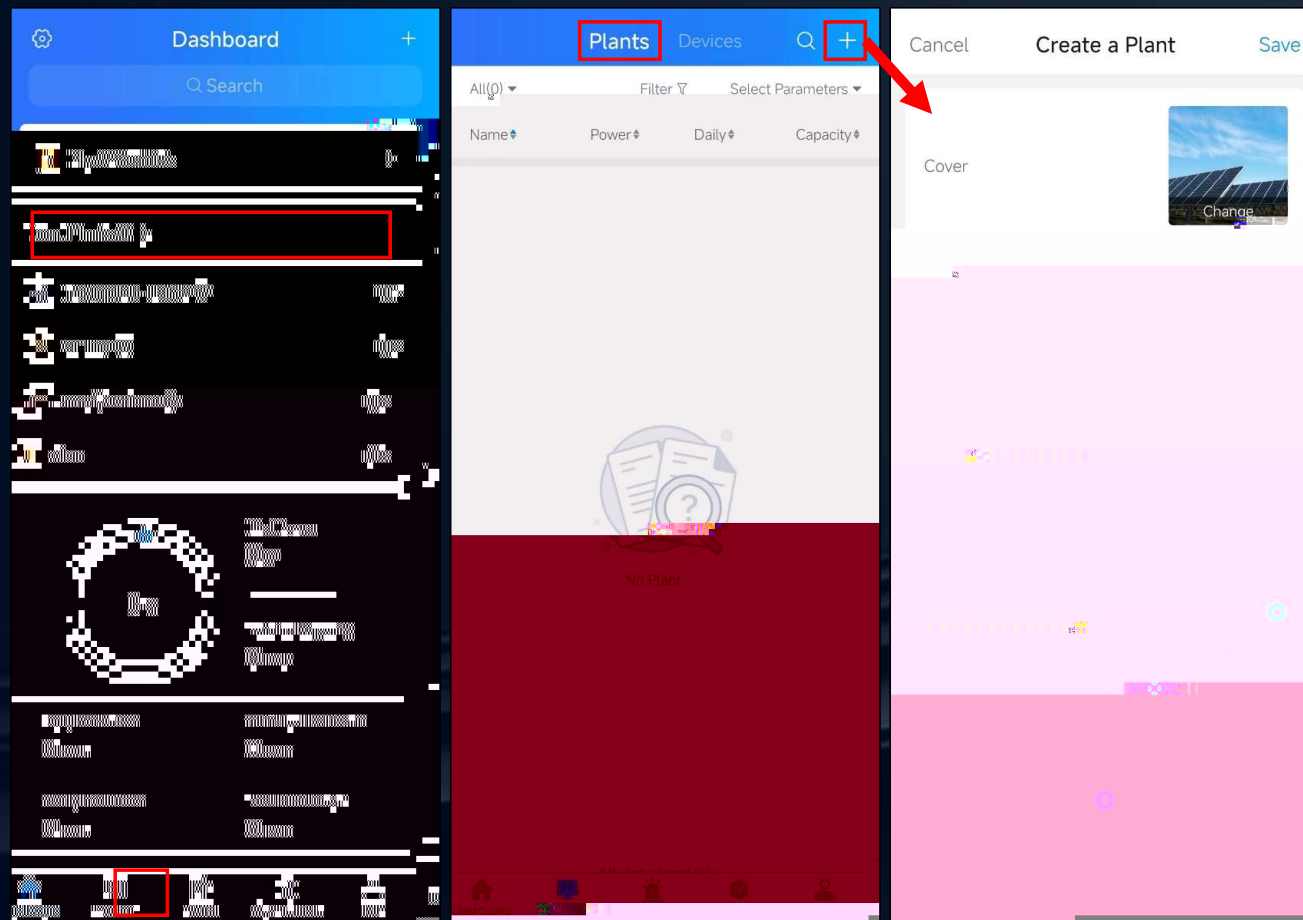


Add Power Plant

After login, you can add your power plant in the app, you can create a power plant through two ways

Click the “Total Plants” or “Monitor” icon go to the plants list;

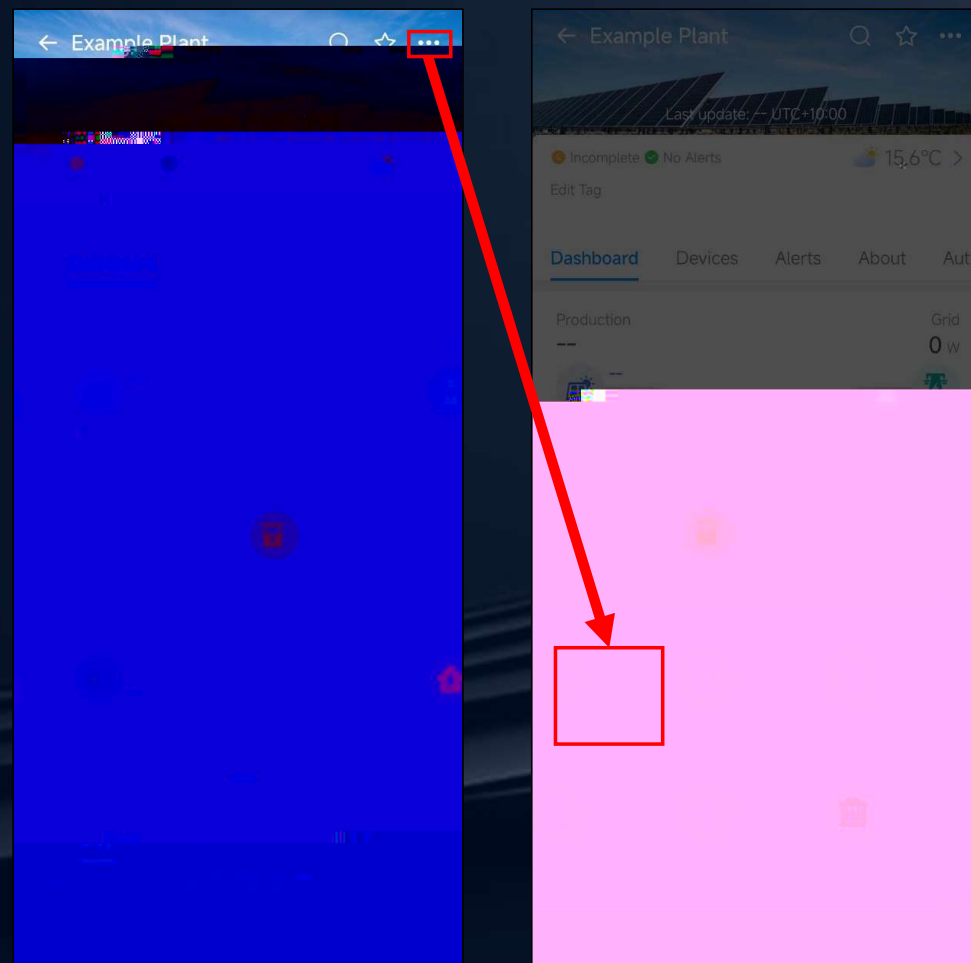
Choose “Plants” and click the “+” at the top right of screen go to “Create a Plant” page.



Add a Logger

Finish add power plant

You can also add logger to the plant at plant page;
Click “...” at the top right of screen, and then click “Add Datalogger”.



Configure Wi-Fi

Click "Done";

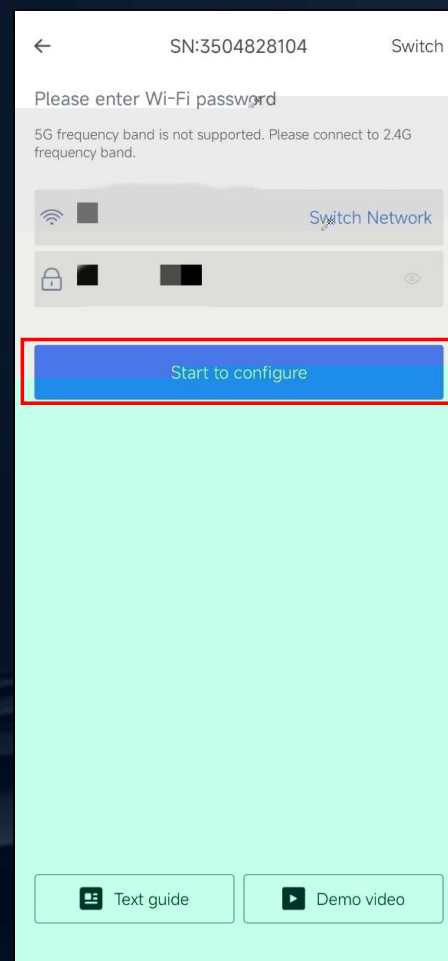
q ° Click "Go to Cf 1" " " Cf "

Add a Logger

Configure Wi-Fi

Choose the Wi-Fi name you want the Wi-Fi dongle connect to, and make sure that your phone also has connected to this Wi-Fi at this time;

Click "Start to configure", it will configure the internet automatically as following steps.



Add a Logger

Configure Wi-Fi

If devices does not configure successfully, then follow the steps shown on the right

Check the connection between Wi-Fi dongle and WFI interface on the PCS, the Wi-Fi signal;

Click "Return to modify", repeat the steps previous page.

Configuration failed

Please follow the steps below for troubleshooting.

1. Turn on WLAN
2. Please make sure the Bluetooth is ON.
3. Wi-Fi network is normal
4. Wireless router does not implement the white-black list
5. Shorten the distance between your phone and device
6. Connect to other Wi-Fi and try again
7. Try to remove special characters such as "(", "=", ") in the Wi-Fi network name.

Return to modify

Try AP mode

Text guide Demo video

Light	Implication	Instruction
	Communicate with base station	<ol style="list-style-type: none"> 1. Light off: Connection to the router failed. 2. On 1s/Off 1s (Slow flash) : Connection to the router succeeded. 3. Light on: Connection to the server succeeded. 4. Light off: Connection to the server failed. 5. Light on: Connection to the server succeeded.
	Connect to the network	<ol style="list-style-type: none"> 1. Light off: Connection to the network failed. 2. Light on: Connection to the network succeeded.
	Connect to the server	<ol style="list-style-type: none"> 1. Light off: Connection to the server failed. 2. Light on: Connection to the server succeeded.



